



# Timspark

Company deck



# What is Timspark

A custom software development boutique with a special business model that ignites and fosters full-fledged development teams and inspires every engineer to deliver outstanding results.



**Core Teams**



**Understanding of industry & business domain**



**High-quality teams with a proven expertise**



**Teams are highly motivated**



**Accountability and ownership within the teams**

# Quick facts

30+

teams onboarded

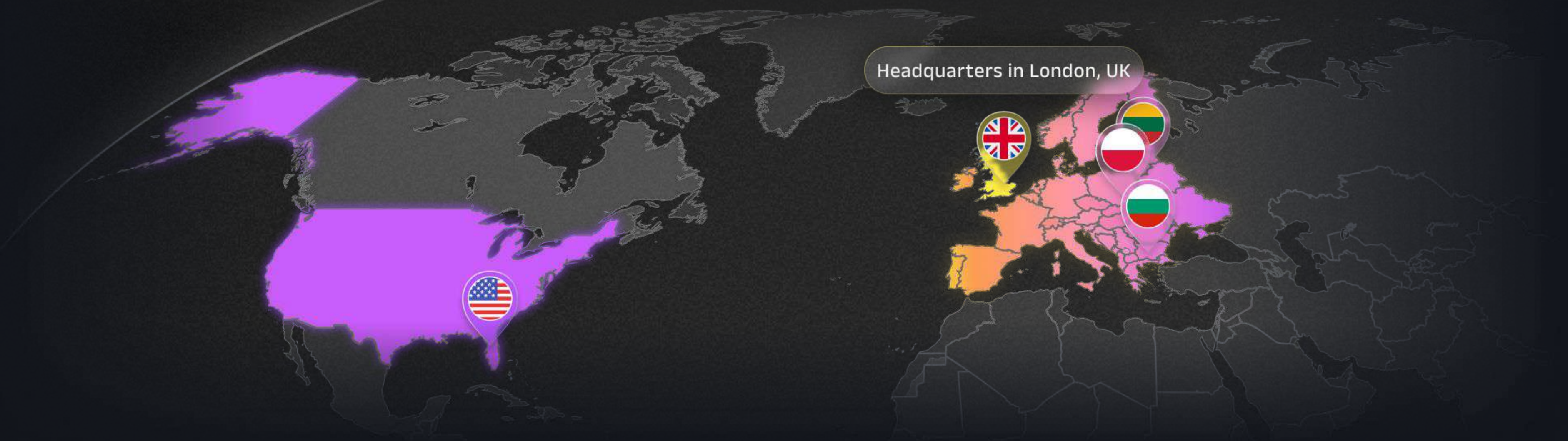
1000+

vetted engineers involved

1300+

projects accomplished

Headquarters in London, UK



# Key information

Certified development centers in

**Poland, Lithuania, Georgia**

Headquarters in

**London, UK**



Global 200+ client base covering following industries:

Finance

Banking

Healthcare

eCommerce

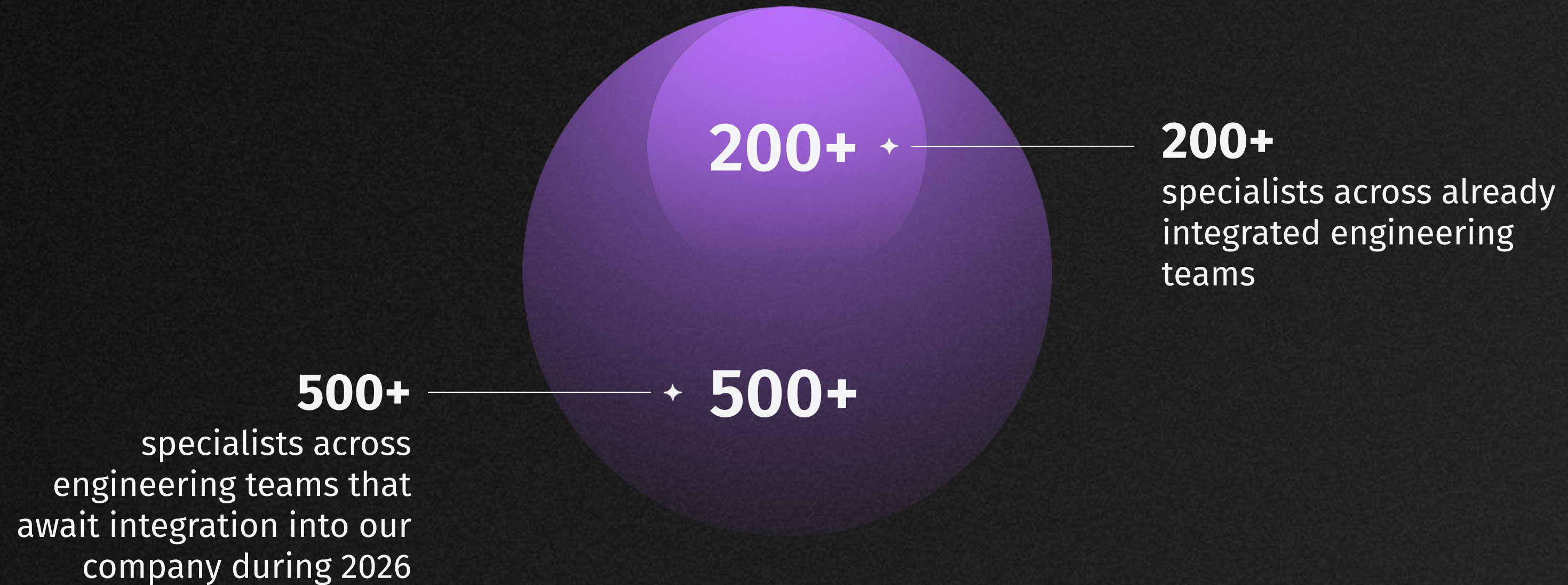
Education

Logistics

Transportation

Manufacturing

# What is Timspark



# Technology stack

## BACK-END



JAVA



RUBY



SOLIDITY



PYTHON



C/C++



UNITY



.NET/C#



RUST



UNREAL  
ENGINE



NODE.JS



COBOL



ELIXIR



PHP



GO



SCALA

## FRONT-END



REACT

Next.js



ANGULAR



VUE.JS



JAVASCRIPT



TYPESCRIPT

## MOBILE



SWIFT



KOTLIN



FLUTTER



REACT  
NATIVE



XAMARIN,  
.NET MAUI

## PLATFORMS



AWS



AZURE



CGP



SAP



SALESFORCE

# Industry competence



eCommerce and retail



Logistics, supply chain  
and transportation



Architecture, construction  
and real estate



Finance, banking and  
insurance



Tourism and hospitality



Energy, oil and gas



Healthcare and life  
sciences



Media and entertainment



Public services and  
utilities



Education



Telecommunications



Agriculture



Manufacturing



Business management



Art and culture



Automotive



HR and recruiting



Ecology

# Our services

Timspark provides professional services around **bespoke software**:



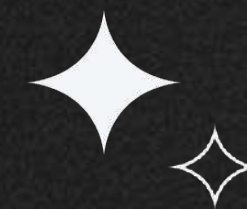
## Full-cycle product development

- ✦ We deliver a premium market-ready product that meets your customers' needs, from conceptualization to the design phase to final production and launch.



## IT-Consulting

- ✦ With our technology audit and consulting expertise, we offer holistic guidance, identify areas for improvement, and develop effective strategies to meet your business needs.



# How you can work with us

We are flexible. At Timsparc, we offer different engagement models, from full-fledged teams to staff augmentation, to help you achieve your current business needs.



## Core Teams

Pre-built development teams with deep expertise



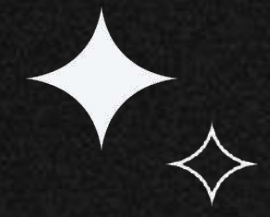
## Dedicated teams

Development units built specifically for your project



## Team augmentation

Skilled engineers to enhance your in-house team



# Portfolio

## Timspark



# Legal Entity Portal for Employee Benefits

INSURANCE

LEGAL

Timspark built legal entity management software that replaces spreadsheets with a centralized web portal. It streamlines the quote-to-policy process, unifies employers, plans, and policies, and automates policy issuance through integrations—giving teams a single source of truth.

## TECHNOLOGIES

.NET, Angular, DevExtreme



\* The image is illustrative. Project details cannot be disclosed due to the conditions of NDA between the Development Team and the Customer.

# Legal Entity Portal for Employee Benefits



## CHALLENGE

Before the project, legal entities and related data were managed in Excel workbooks shared across teams.

At the same time, the new policy lifecycle management software had to follow existing UI standards built with DevExtreme and be adopted without disrupting day-to-day work.

The client needed a secure web portal that would:

Act as a single, reliable legal entity management system

Support the complete quote-to-policy journey

Integrate with APAS and Box.com

Fit into their corporate UX standards and delivery processes

\* The image is illustrative. Project details cannot be disclosed due to the conditions of NDA between the Development Team and the Customer.

# Legal Entity Portal for Employee Benefits

## SOLUTION

Timspark implemented a browser-based portal that centralizes legal entities, employers, quotes, and policies. Delivered in iterations, it gradually replaced Excel workflows with a structured web interface.

### Centralized legal entity management

The portal provides a single source of truth for legal entities:

- Create, view, and edit entities in a structured interface
- Compare entities side-by-side and review key details
- Track statuses (draft, pending, active, cancelled) across the quote-to-policy lifecycle

It replaces fragmented Excel files with a unified legal entity management system.

### Quote-to-policy workflow

The portal supports the full process from quote to active policy:

- Capture employers, benefit plans, and add-ons in one place
- Update statuses as data is reviewed and approved
- Issue policies only when all required information and documents are complete

The system enforces business rules and reduces manual handovers.

# Results

The client moved from spreadsheet-driven processes to a structured, maintainable **legal entity management software platform**.

01

Legal entities, employers, and policy-related data now live in a single system instead of multiple Excel files.

02

Automated workflows, clear status tracking, and integrations with APAS and Box.com reduced manual data entry and the risk of inconsistencies.

03

Role-based access and centralized document management give teams clearer oversight of the quote-to-policy lifecycle and simplify audits.

04

Built with modern technologies and DevExtreme UI standards, the portal is easy to extend with additional features, modules, or integrations — a solid example of scalable **custom legal software development**.

# Cross-Platform Cinema Media App

ENTERTAINMENT

MEDIA

FILM DISCOVERY

The application is the industry's premier research tool, housing the world's largest library of fully searchable, high-definition movie images. We developed a high-performance, cross-platform software using Flutter and Dart to provide a seamless discovery and playback experience across Web, iOS and Android from a single, scalable codebase.

## TECHNOLOGIES

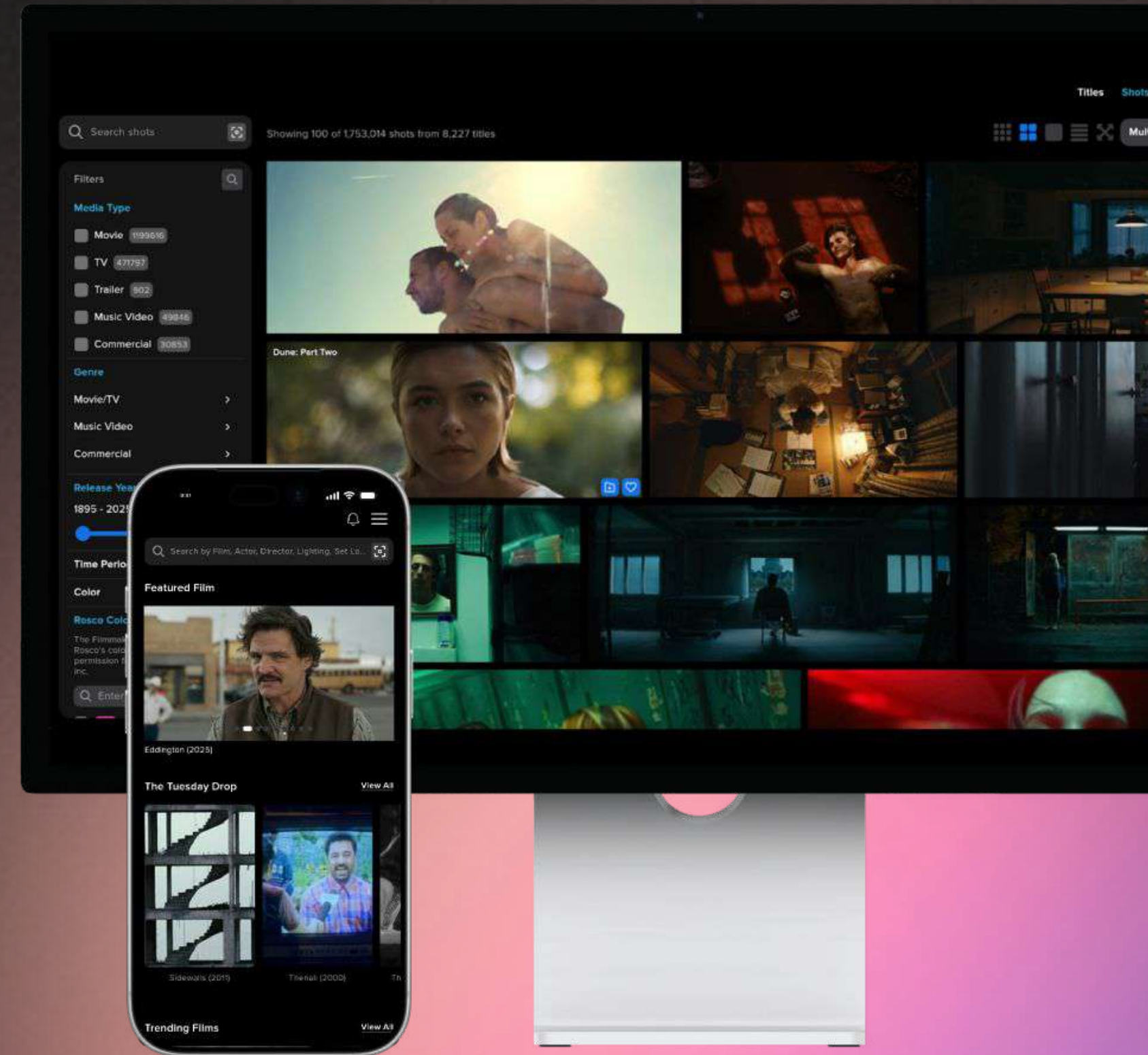
Flutter (Dart), PHP (Codeigniter), PostgreSQL, Firebase, AWS S3

**State Management:** Bloc / Cubit

**Navigation:** GoRouter

**Media:** Custom Video Player, Vimeo Video Player, YouTube

**Payments:** Stripe



\* The image is illustrative. Project details cannot be disclosed due to the conditions of NDA between the Development Team and the Customer.

# Cross-Platform Cinema Media App

## CHALLENGE

Before the migration, the client struggled with **three separate codebases** (Kotlin for Android, Swift for iOS, and Ajax/JS/PHP for Web), each with inconsistent logic and high maintenance costs.

### Specific obstacles included:

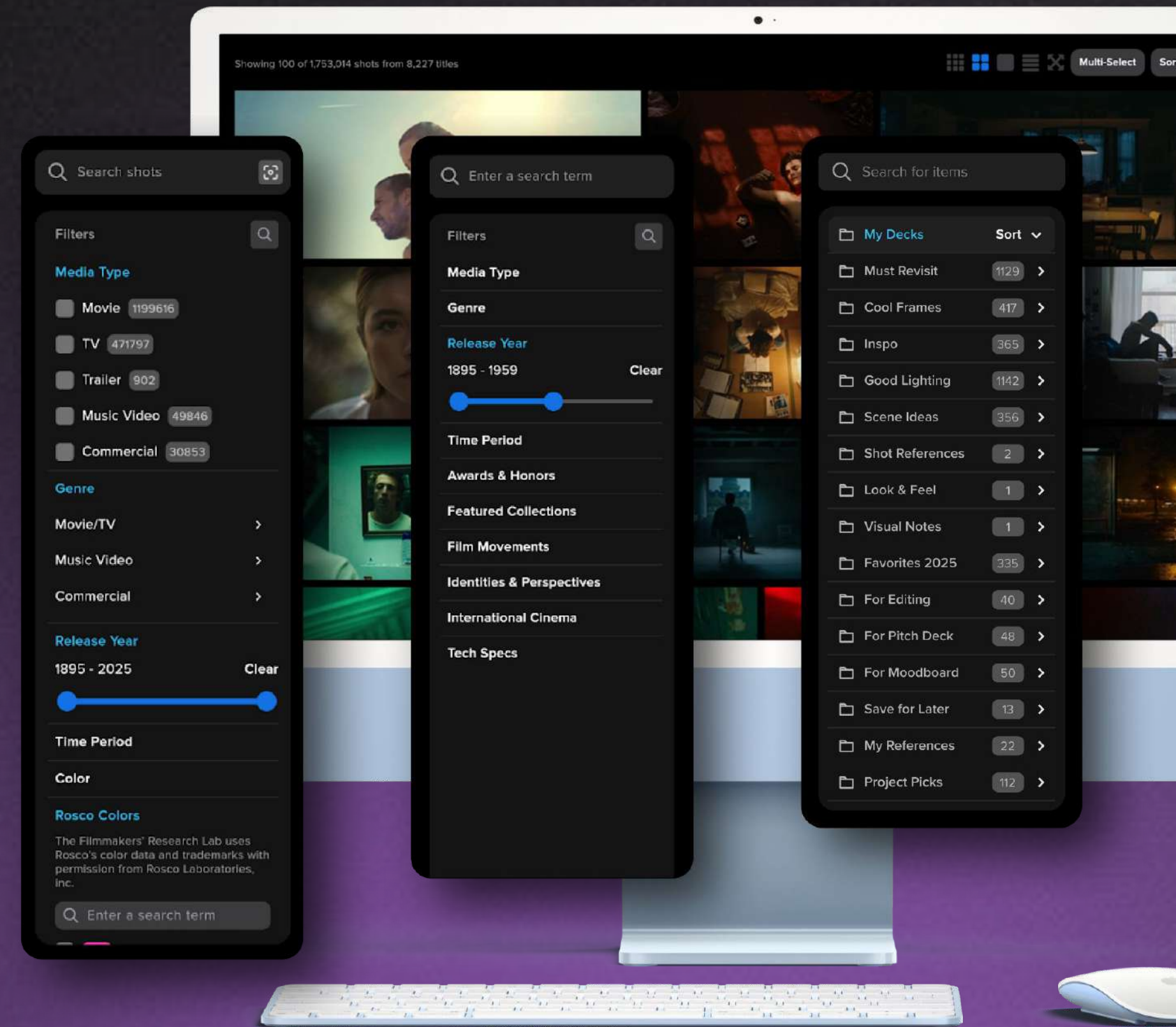
- Unifying the codebase without losing native performance.
- Safely migrating thousands of users, incl. enterprise accounts and metadata from an old version of the app to a new one.
- Efficiently handling heavy media content (millions of high-res stills and video previews) across devices.
- Integrating complex authentication (Apple, Google, Okta) and Stripepayments in a cross-platform environment.

\* The image is illustrative. Project details cannot be disclosed due to the conditions of NDA between the Development Team and the Customer.

# Cross-Platform Cinema Media App

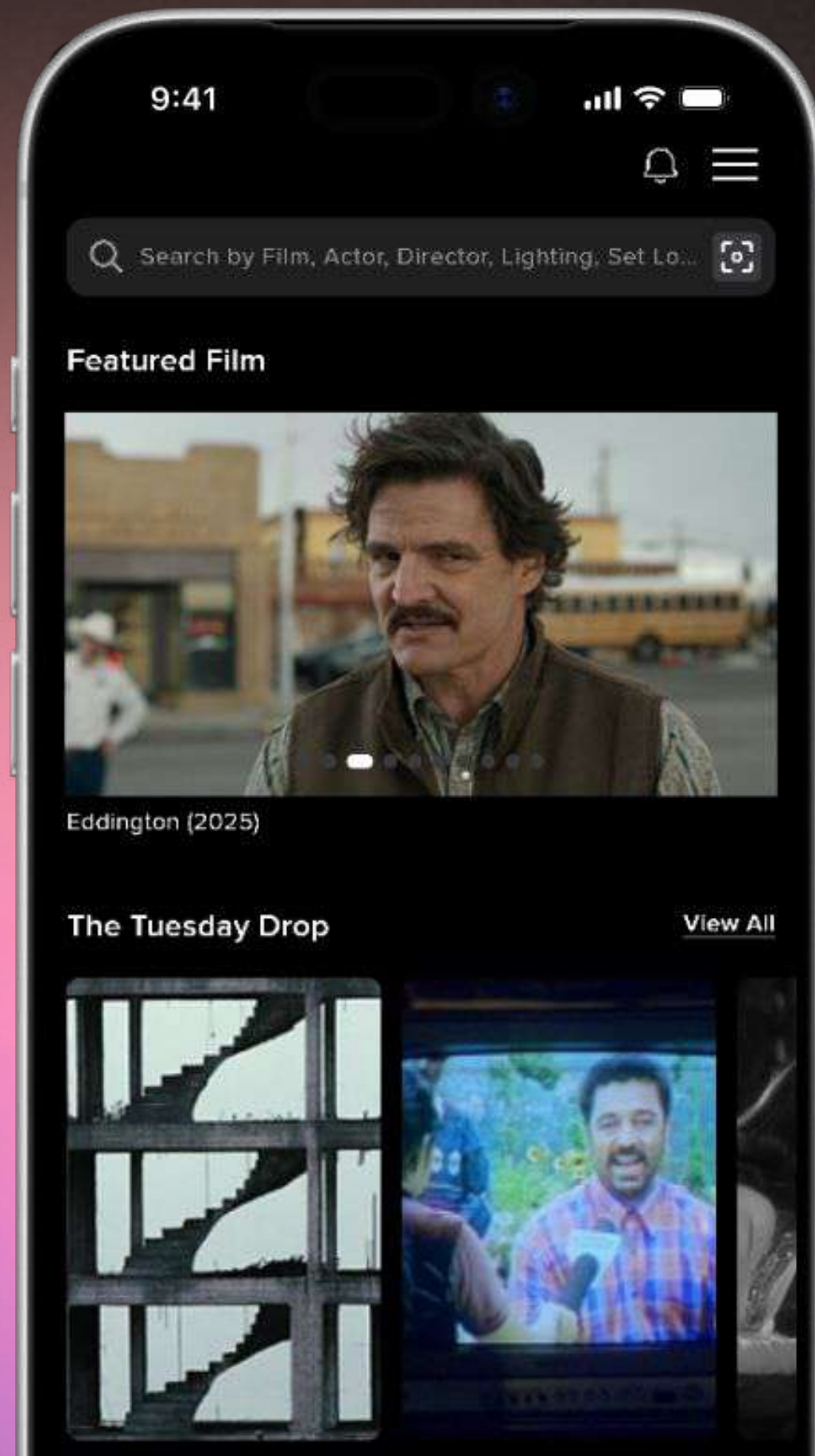
## SOLUTION

The system unifies web, iOS, and Android in a single Flutter codebase, combining custom media playback, robust caching, and scalable state management to deliver seamless browsing and consistent performance. It supports advanced media discovery with responsive layouts, deep linking, and URL-based navigation, while an SEO-ready architecture improves content visibility. A custom media engine with adaptive streaming and smart caching ensures smooth playback, and secure migration with integrations like Stripe, Okta, Firebase, Apple, and Google enables a frictionless user transition.



\* The image is illustrative. Project details cannot be disclosed due to the conditions of NDA between the Development Team and the Customer.

# Cross-Platform Media Experience



## SOLUTION

Built with Flutter for iOS and Android, this mobile solution combines responsive navigation, scalable Bloc/Cubit state management, custom caching for large media libraries, and a bespoke video player with thumbnail previews and adaptive streaming.

The result is a smooth, feature-rich user experience designed for performance, consistency, and long-term scalability.

\* The image is illustrative. Project details cannot be disclosed due to the conditions of NDA between the Development Team and the Customer.

# Results

The solution improved efficiency, performance and delivery transparency. A unified codebase lowered maintenance effort, ensured seamless migration, boosted speed and discoverability, and supported faster iteration through close day-to-day collaboration.

- 01 The unified codebase reduced development costs and maintenance time
- 02 Achieved **100% successful** user and data migration
- 03 Significant improvements in page load speeds and video playback fluidity
- 04 Faster delivery cycles with biweekly updates and demos, and rapid response to changing requirements

# Mobile Game Development

ENTERTAINMENT

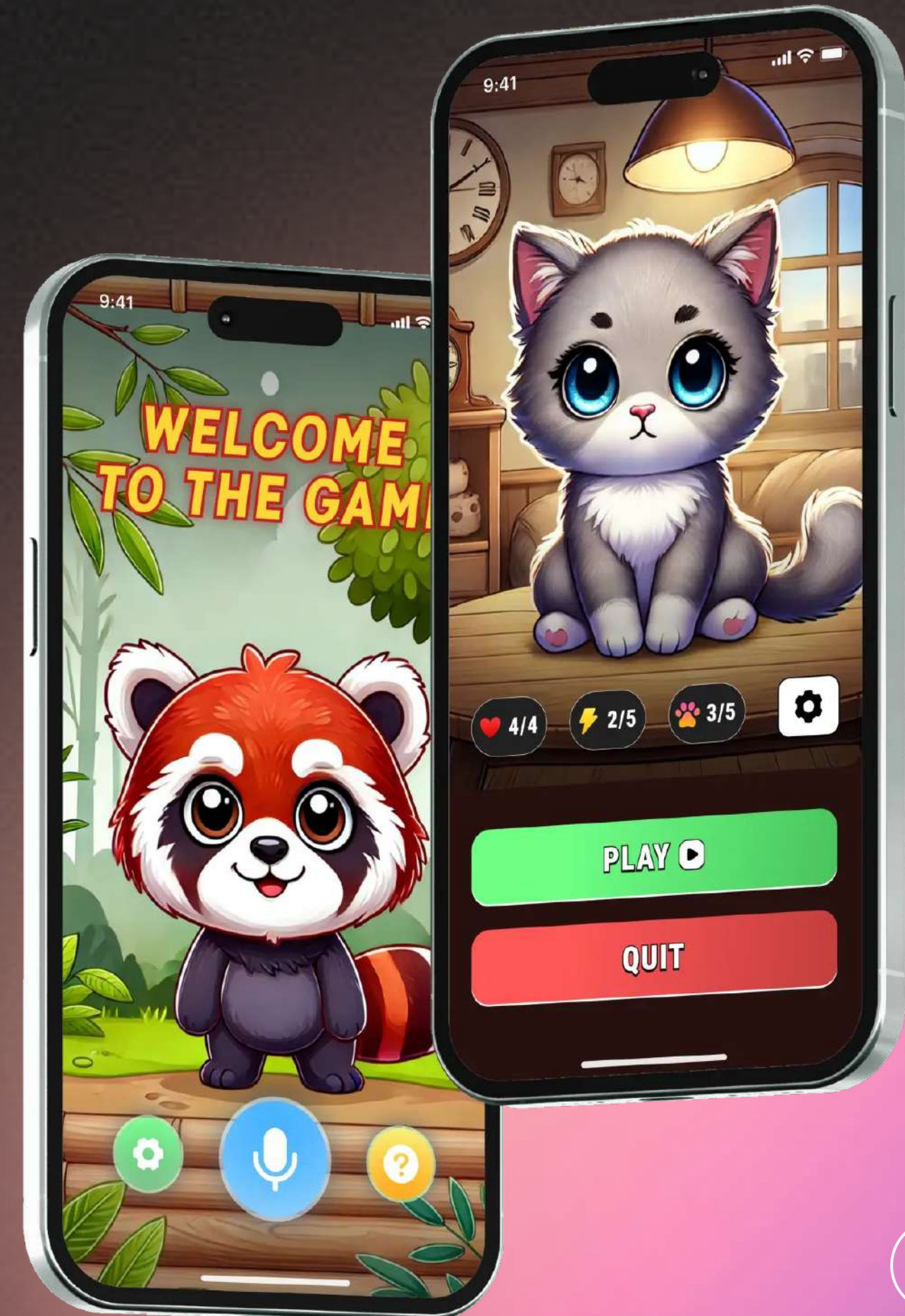
GAMING

By providing expert developers skilled in Unity, Timspark ensured seamless integration with the client's existing teams, offering flexible support to scale development capabilities. The client is a European mobile gaming studio with a vision to create games that resonate with players globally.

## TECHNOLOGIES

Unity, C#, Photoshop (PS), Spine, Figma, NodeJS, AWS, OpenAI API

\* The image is illustrative. Project details cannot be disclosed due to the conditions of NDA between the Development Team and the Customer.



# Mobile Game Development

## CHALLENGE

Our client faced the challenge of scaling their development team to meet the growing demands of their mobile game projects. As a newly established studio, they needed to quickly augment their team with skilled developers who could seamlessly integrate into their workflow, accelerate the development process, and deliver high-quality Unity-based mobile games on time.

# Mobile Game Development

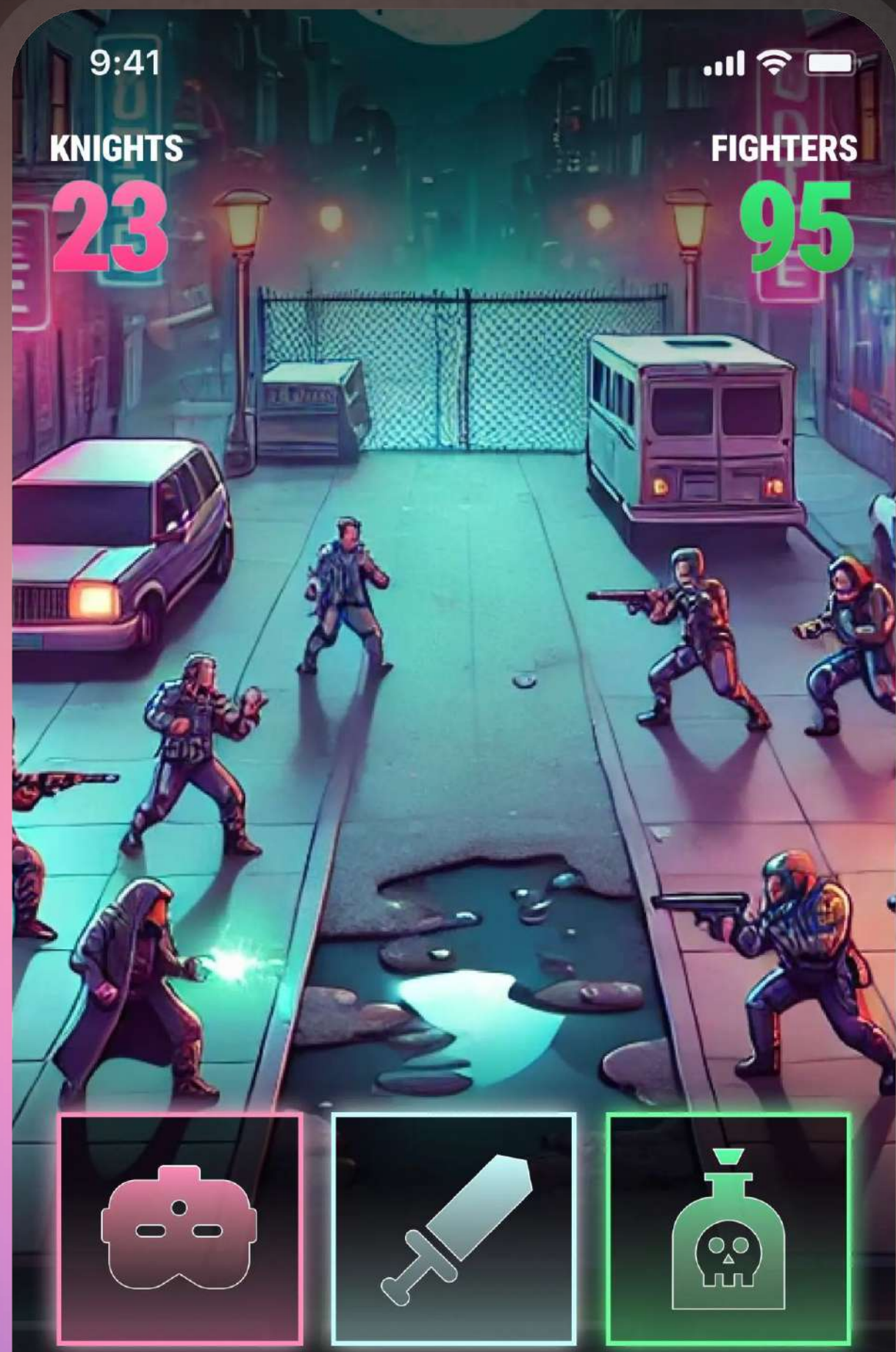
## SOLUTION

Timspark provided a team of expert developers who integrated directly with the client's in-house team, ensuring smooth collaboration and communication. This solution allowed the client to scale rapidly without compromising quality or delivery timelines.

\* The image is illustrative. Project details cannot be disclosed due to the conditions of NDA between the Development Team and the Customer.



# Mobile Game Development



## SOLUTION

A collection of mobile games combining education, strategy, and entertainment: an interactive game for children aged 3–12 featuring an AI-powered robot companion and educational adventures; a casual game blending animal rescue with engaging block puzzle mechanics; and a 2D idle RPG where players strategically compete for control of the city's criminal underworld.

\* The image is illustrative. Project details cannot be disclosed due to the conditions of NDA between the Development Team and the Customer.

# Results

Collaboration with Timsark allowed the company to scale its development team efficiently, ensuring high-quality output and achieved fast time-to-market for its mobile games. By integrating our mobile game developers, the company could maintain a rapid development pace while focusing on its creative vision.

01

## **Cost-effective scaling**

By outsourcing development resources, the company saved on recruitment and training costs while benefiting from expert-level skills.

02

## **Faster time to market**

The rapid scaling of the development team accelerated the game development process, providing a competitive advantage.

03

## **Increased flexibility**

The company could adjust team size and capacity based on project needs, maintaining efficiency and adapting to changing requirements.

# Carbon Capture Technology Solution

## BIOTECHNOLOGY

A cloud-based industrial IoT solution built for real-time data processing and communication. It uses MQTT for efficient data transfer, Docker for flexible deployment, and Solara with FastAPI for seamless integration with the IoT cloud. Designed for reliability and scalability on Google Cloud Platform (GCP).

## TECHNOLOGIES

Python, MQTT, Docker, Solara, FastAPI, Google Cloud Platform (GCP), PostgreSQL, SQL and SQLAlchemy



\* The image is illustrative. Project details cannot be disclosed due to the conditions of NDA between the Development Team and the Customer.

# Carbon Capture Technology Solution

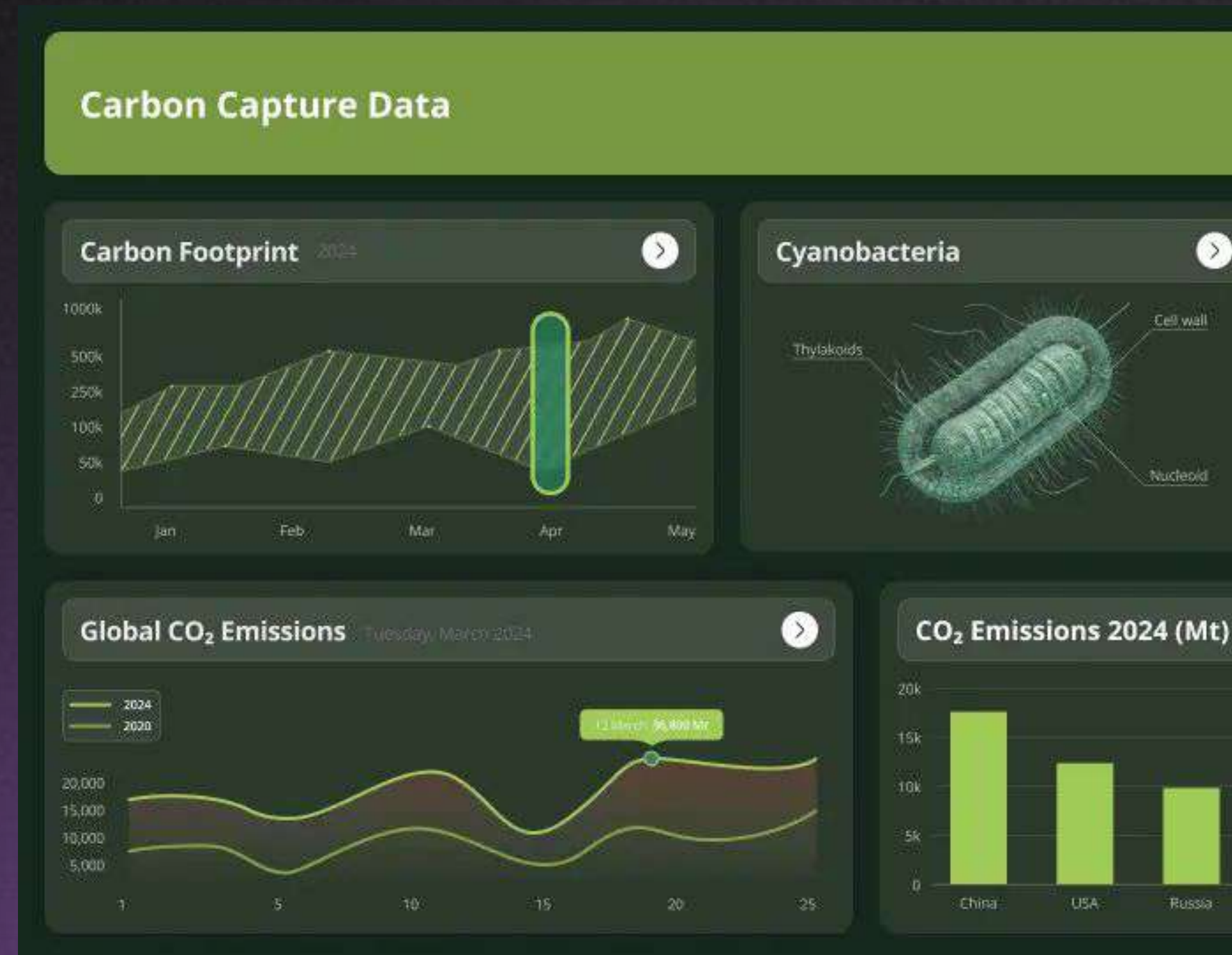
## CHALLENGE

The client faced challenges in implementing an industrial IoT solution capable of managing reliable, real-time data transfer while ensuring scalable cloud deployment. With limited experience in deploying production-level applications, they required a secure, lightweight communication protocol and an efficient cloud infrastructure to support industrial IoT and carbon capture utilization.

# Carbon Capture Technology Solution

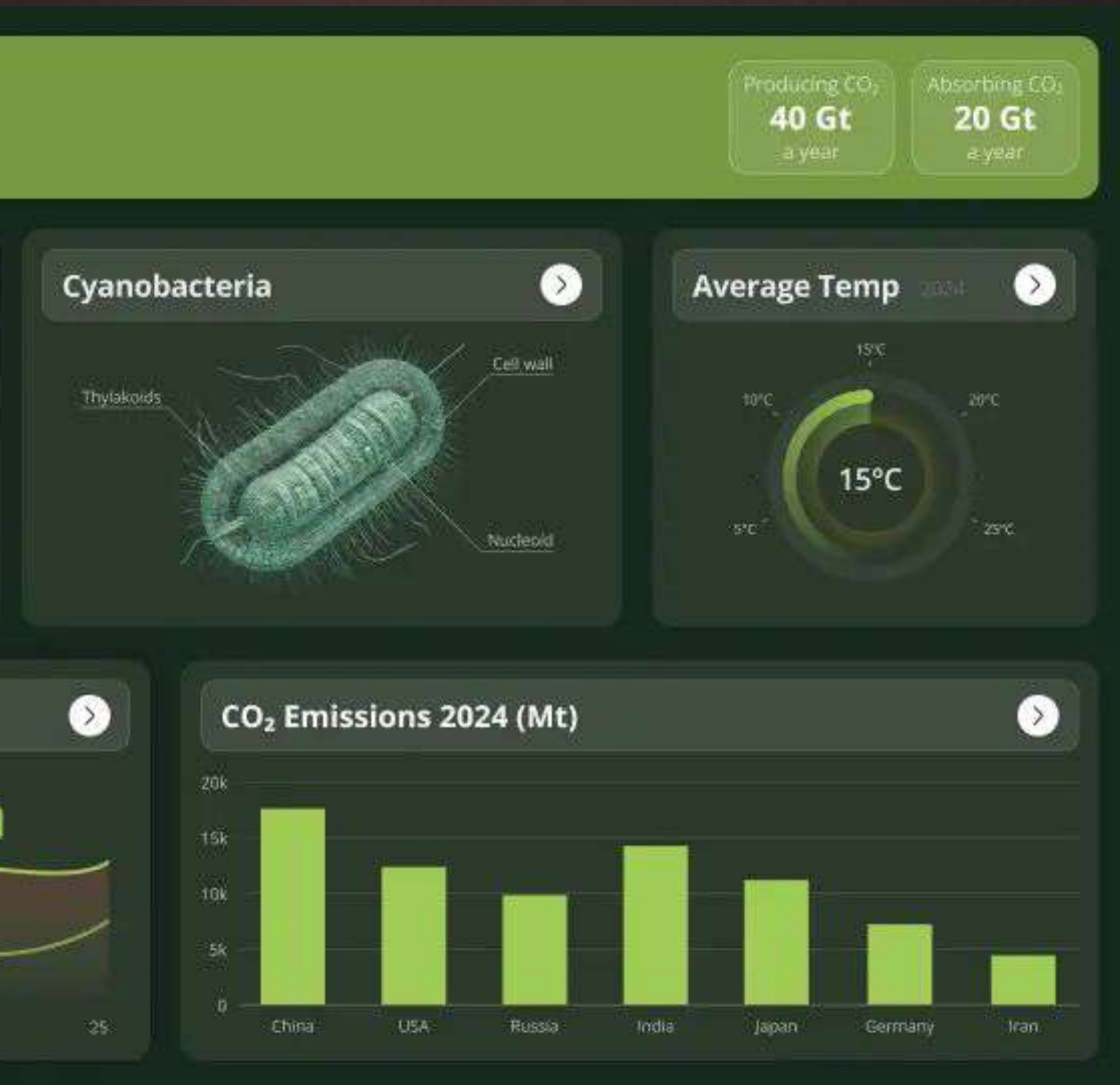
## SOLUTION

Timspark provided expertise in IoT data communication and real-time command execution, implementing an MQTT broker for reliable, lightweight data transfer. Our solution included Docker-based infrastructure, enabling cloud-based industrial IoT scalability on GCP.



\* The image is illustrative. Project details cannot be disclosed due to the conditions of NDA between the Development Team and the Customer.

# Carbon Capture Technology Solution



## SOLUTION

Our developers leveraged Solara and FastAPI to streamline efficient application development for the client, while integrating Looker to enhance data visualization for monitoring industrial IoT and carbon capture utilization. Through continuous support, we ensured long-term scalability and optimized production processes for the client's needs.

\* The image is illustrative. Project details cannot be disclosed due to the conditions of NDA between the Development Team and the Customer.

# Results

We implemented a scalable and secure IoT communication system that enables real-time data processing and seamless data exchange between industrial devices, supporting long-term growth in CCUS.

01

**Real-Time Communication** – Secure IoT data transfer using MQTT for reliable device connectivity

02

**Scalability & Cloud Readiness** – Docker and GCP ensure flexible, cloud-based infrastructure

03

**Data Management** – Efficient handling and processing of industrial IoT data

04

**Analytics & Monitoring** – Enhanced visibility through Looker dashboards

05

**Reliability & Support** – Ongoing improvements and continuous system support

# Point Cloud Segmentation and BIM Conversion

ARCHITECTURE

ENGINEERING

CONSTRUCTION

A deep learning-powered solution that performs semantic and instance segmentation of point cloud data, converting it into accurate Building Information Models (BIM).

## TECHNOLOGIES

**Backend:** Python, TensorFlow, PyTorch

**Database:** AWS/Azure

**Point Cloud Processing:** OpenCV, PCL (Point Cloud Library)

**BIM Integration:** AutoCAD, Revit, BIM 360

**3D Scanning:** LiDAR technology



\* The image is illustrative. Project details cannot be disclosed due to the conditions of NDA between the Development Team and the Customer.

# Point Cloud Segmentation and BIM Conversion

## CHALLENGE

Timspark engineers were tasked with addressing the challenge of efficiently segmenting point cloud data and converting it into precise BIM models. To meet the client's needs, our team implemented and tested deep learning models such as Pointcept to achieve high accuracy in identifying building elements like walls, windows, and doors. Additionally, the engineers optimized the model inference pipeline for smooth integration into software like Revit and AutoCAD, ensuring seamless and accurate BIM conversions.

# Point Cloud Segmentation and BIM Conversion

## SOLUTION

Our developers implemented a Point Cloud Segmentation and BIM Conversion Solution using a 3D point deep learning framework to achieve high-precision segmentation and classification of point cloud data.

The system seamlessly integrates with Revit and AutoCAD software, facilitating efficient BIM workflows for architecture and construction projects. It optimized data processing and enhanced the client's infrastructure management capabilities.



\* The image is illustrative. Project details cannot be disclosed due to the conditions of NDA between the Development Team and the Customer.

# Point Cloud Segmentation and BIM Conversion



## SOLUTION

This solution was specifically designed to precisely identify structural components like walls, windows, and doors, and convert them into detailed Building Information Models (BIM) for enhanced accuracy and efficiency.

\* The image is illustrative. Project details cannot be disclosed due to the conditions of NDA between the Development Team and the Customer.

# Results

The solution delivered significant improvements in accuracy and efficiency, enabling the client to automate point cloud segmentation and BIM conversion. This led to faster project turnaround times, reduced manual labor, and minimized errors in identifying and modeling building elements.

01

Faster project turnaround with automated segmentation & BIM conversion

02

Reduced manual labor and minimized errors in modeling

03

Seamless integration with industry-standard BIM tools (Revit, AutoCAD)

04

Cost savings & improved productivity for AEC workflows

# Direct Material Risk Assessment

PHARMACEUTICAL

A global pharmaceutical leader partnered with us to build a Snowflake-based risk assessment solution. By combining data integration, automation, and interactive dashboards, the platform delivers real-time supply chain insights and enhances risk management with scalable, data-driven decision-making.

## TECHNOLOGIES

**Data platform & modelling:** Snowflake (Data Vault 2.0)

**ETL / ingestion:** Talend

**Transformations & tests:** dbt + internal automated-testing framework (GitLab CI/CD)

**Visualization:** Tableau



# Direct Material Risk Assessment

## CHALLENGE

The project faced challenges with fragmented data from ERP systems like SAP, spreadsheets, and internal tools, requiring robust ETL pipelines and standardization. Manual risk assessments caused delays and inconsistencies, highlighting the need for automation.

Evolving requirements added complexity, requiring quick adaptation while maintaining data integrity—driving the need for a flexible, automated, and scalable solution.

# Direct Material Risk Assessment

## SOLUTION

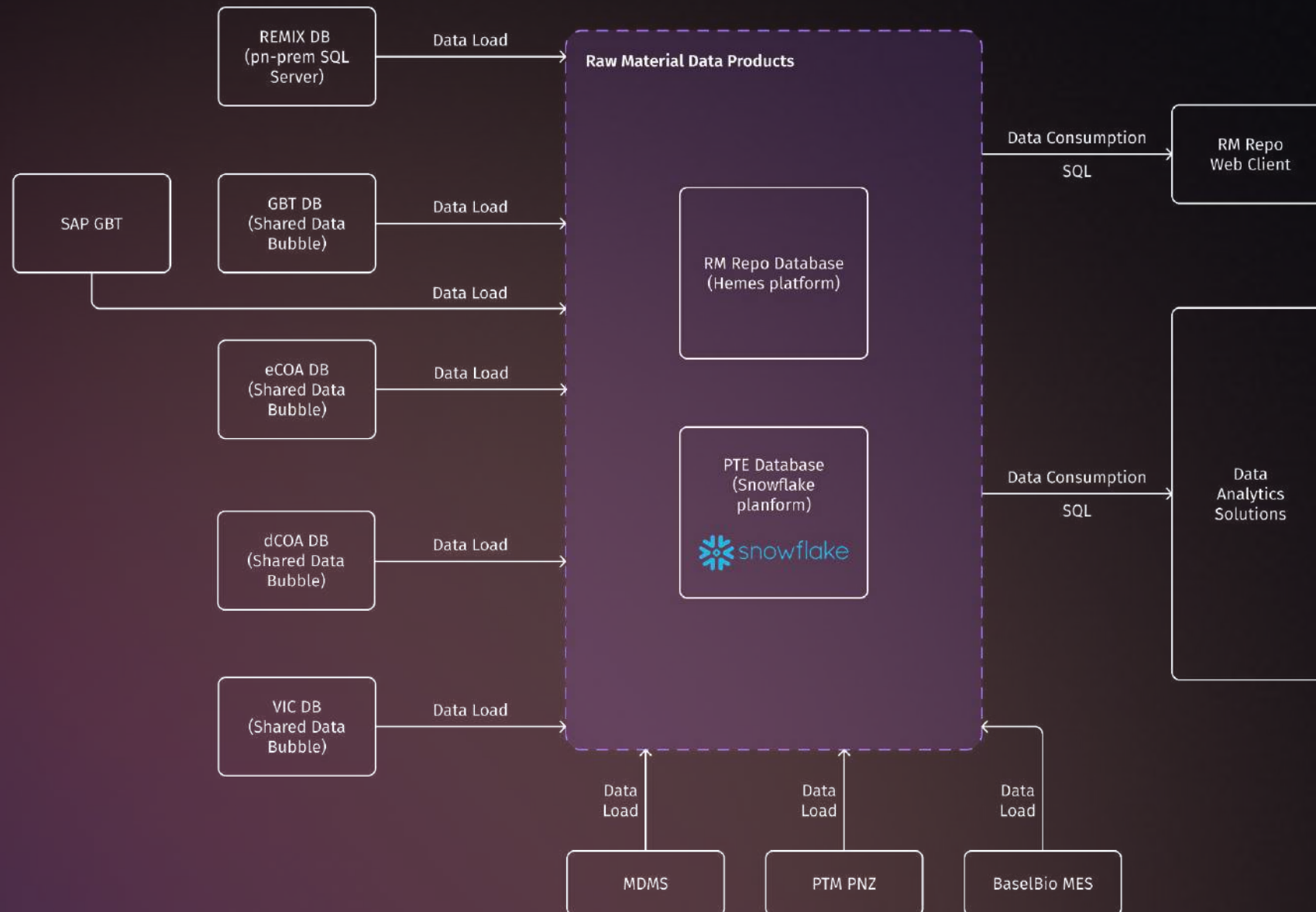
The team delivered a fully automated, scalable solution for direct material risk assessment, integrating ERP, spreadsheet, and internal data using Talend ETL and Snowflake with a Data Vault 2.0 architecture for consistency and traceability.

- Automated Risk Scoring – dbt transforms raw data into standardized risk indicators for vendor reliability, material quality, and availability
- Data Quality & Validation – GitLab CI/CD runs automated tests to ensure accuracy and trust in outputs
- Interactive Dashboards – Tableau provides real-time visibility into vendor performance and material-level risks with filters and drill-downs



\* The image is illustrative. Project details cannot be disclosed due to the conditions of NDA between the Development Team and the Customer.

# Direct Material Risk Assessment



## SOLUTION

The system consolidates ERP, spreadsheet, and internal data into a unified risk management platform, with core databases on Hemes and Snowflake (Data Vault) supporting processing, transformation, and reporting. It delivers fast queries, real-time supply chain insights, and automated risk management, backed by version-controlled documentation for audit readiness, eliminating manual processes and improving data reliability.

\* The image is illustrative. Project details cannot be disclosed due to the conditions of NDA between the Development Team and the Customer.

# Results

Within 10 months, our team provided a flexible, automated system that greatly enhanced the precision and effectiveness of risk evaluation procedures.

01

Automation with Talend and dbt reduced manual work, freeing the team for higher-value tasks.

02

Snowflake's Data Vault design ensures scalability, traceability, and easy addition of new data sources.

03

GitLab CI/CD automated testing enabled smooth integration of all sources without major data issues.

04

Logic-driven risk models replaced outdated manual processes, tailored to client needs.

05

Interactive Tableau dashboards provide real-time vendor and material risk insights for faster, informed decisions.

# Enterprise Vulnerability Management Solution

CYBERSECURITY

Our team helped the client develop a cybersecurity platform designed to find and showcase detailed analytics on exposures and vulnerabilities. The system provides clients with fast, accurate insights into their security posture, enabling proactive risk management and improved cyber resilience.

## TECHNOLOGIES

Node.js, NestJS, React (TypeScript), SQL, MongoDB, Microfrontend, Microservices, Kafka, Redis, Jenkins



# Enterprise Vulnerability Management Solution

## CHALLENGE

The client required a high-performance analytics application capable of handling millions of records and delivering near real-time query results.

### Key challenges:

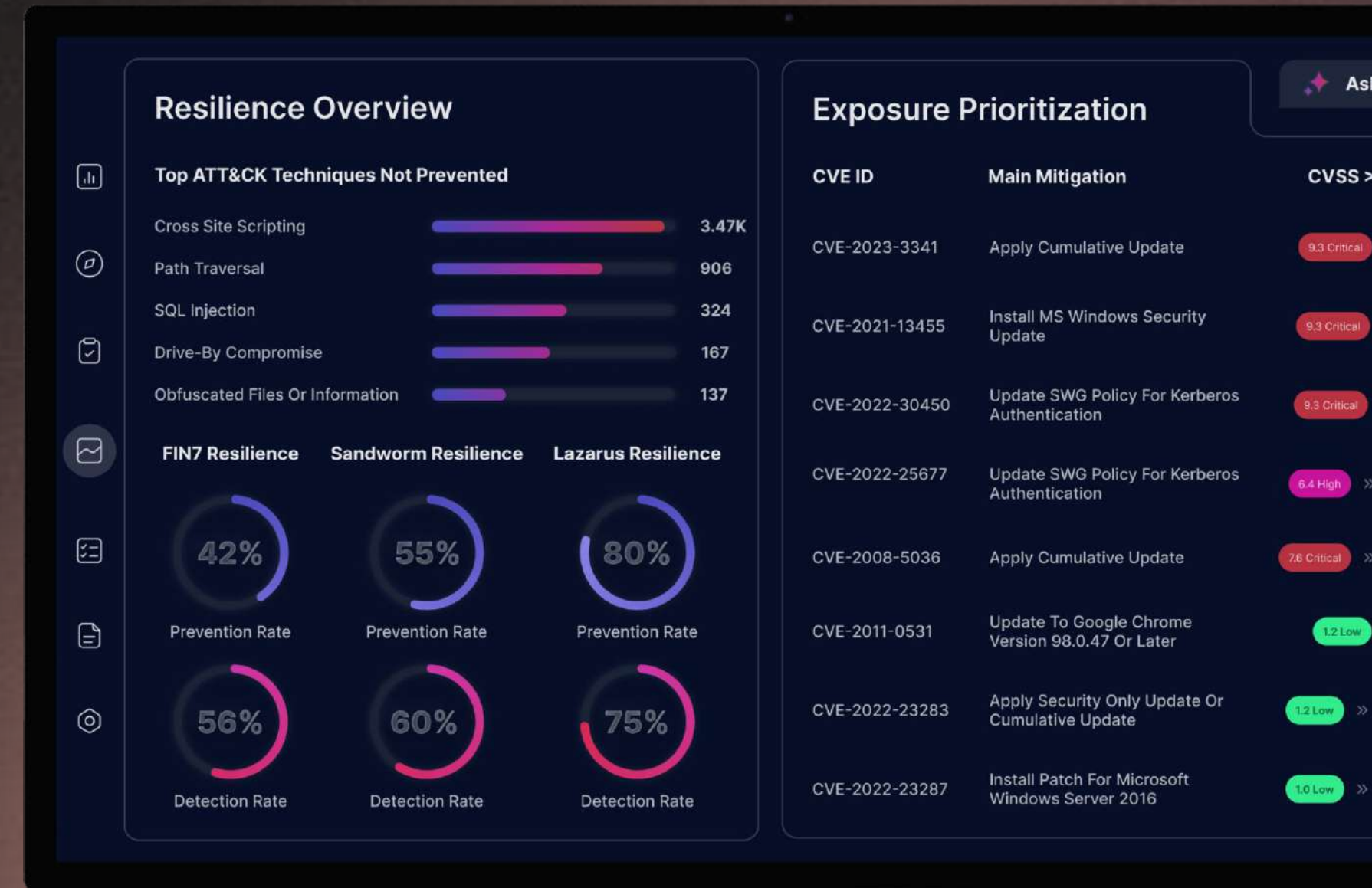
- Designing queries optimized for extremely large data sets.
- Ensuring application performance at scale without compromising accuracy.
- Supporting the rapid development of new features while maintaining system stability.

# Enterprise Vulnerability Management Solution

## SOLUTION

The team implemented a comprehensive refactoring and optimization strategy, migrating data from MongoDB to PostgreSQL to improve query performance and refactoring the backend using microservices and microfrontends. Kafka and Redis were introduced for asynchronous processing and caching, while 100% unit test coverage ensured reliability and reduced regression risks.

As a result, the platform delivers faster insights, improved data accuracy, continuous validation of security controls, and greater flexibility for future expansion.



\* The image is illustrative. Project details cannot be disclosed due to the conditions of NDA between the Development Team and the Customer.

# Results

The improvements delivered tangible business outcomes:

01

Queries became multiple times faster, dramatically improving user experience.

02

Strong unit test coverage allowed safe and quick rollout of new functionality.

03

Optimized database structure, reduced infrastructure overhead, and maintenance costs.

04

The client can now access vulnerability analytics in real-time, strengthening their ability to proactively mitigate risks.

# Salesforce Omnistudio Testing for Insurance Company

INSURANCE

Quality assurance and testing services for a Salesforce-based insurance platform supporting operations of a leading global specialty insurer. The client is a global specialty insurance provider delivering innovative risk management solutions to commercial clients and underwriting partners across multiple industries.

## TECHNOLOGIES

**Testing:** End-to-end (E2E) tests for policy creation processes built on Salesforce Omnistudio

**Backend:** .NET 8 backend services unit testing

**Frontend:** Angular 17, DevExtreme, Jasmine, Karma



# Salesforce Omnistudio Testing for Insurance Company

## CHALLENGE

The project faced several key challenges, including ensuring seamless integration and delivery of new side applications within the Salesforce ecosystem, performing comprehensive regression testing during OmniStudio package upgrades, and validating newly introduced insurance products and document templates across multiple countries with different regulatory and localization requirements.

# Salesforce Omnistudio Testing for Insurance Company

## SOLUTION

To address these challenges, the team implemented a comprehensive testing strategy.

### Smoke testing

Smoke testing was conducted for new Salesforce app integrations to ensure basic functionality and stability.

### Regression testing

Regression testing was performed for Omnistudio package upgrades to confirm that no existing features were disrupted. New insurance products and document templates for Canada and other countries were rigorously tested to validate their logic and compliance with business requirements. basic functionality and stability.

### Salesforce objects and processes

The team also validated new Salesforce objects, fields, and approval routing logic to support the automation of licensing processes. Email notification triggers and wording were tested within end-to-end insurance processes to ensure accuracy and consistency.

# Results

The efforts of the team delivered significant business value. The quality and reliability of the insurance management system were greatly improved, ensuring smoother operations.

01

## Process automation

Automation of licensing processes through new Salesforce objects and fields enhanced efficiency and reduced manual effort.

02

## Compliance management

Compliance with document templates and wordings for various countries was ensured, minimizing the risk of errors and inconsistencies.

03

## Bug resolution

Production bugs related to Omniscripts were resolved, restoring core functionality and improving user experience.

# Microlearning Platform for Education

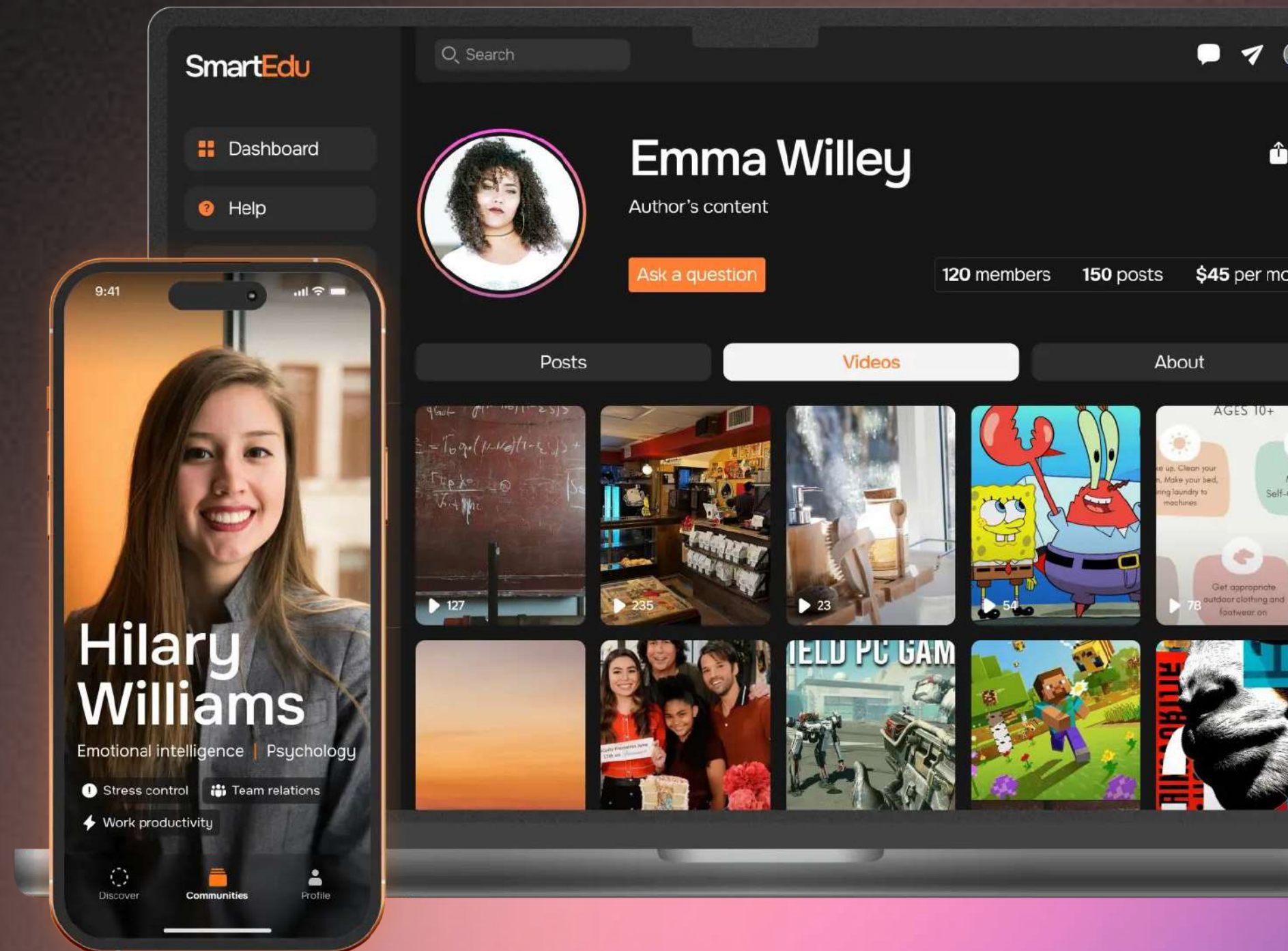
EDTECH

EDUCATION

Timspark provided comprehensive mobile development and frontend engineering services, utilizing Flutter for cross-platform mobile app development and React for building responsive and dynamic frontend interfaces.

## TECHNOLOGIES

React, Redux Toolkit, SCSS, AWS Cognito, Node.js, TypeScript, MongoDB, AWS Lambda, SNS, Cognito, Flutter



\* The image is illustrative. Project details cannot be disclosed due to the conditions of NDA between the Development Team and the Customer.



# Microlearning Platform for Education

## CHALLENGE

Build and launch a new web application while supporting the client in developing and expanding features for their mobile app. The client is an edtech startup focused on transforming the learning experience by providing a microlearning platform that delivers short, engaging educational content to help users learn more efficiently and continuously.

## SOLUTION

Timspark was responsible for the end-to-end development of the app, including both mobile and web platforms. The scope of work included creating a cross-platform mobile app using Flutter, developing the front end for the web interface with React, and ensuring seamless integration between the app and backend services.

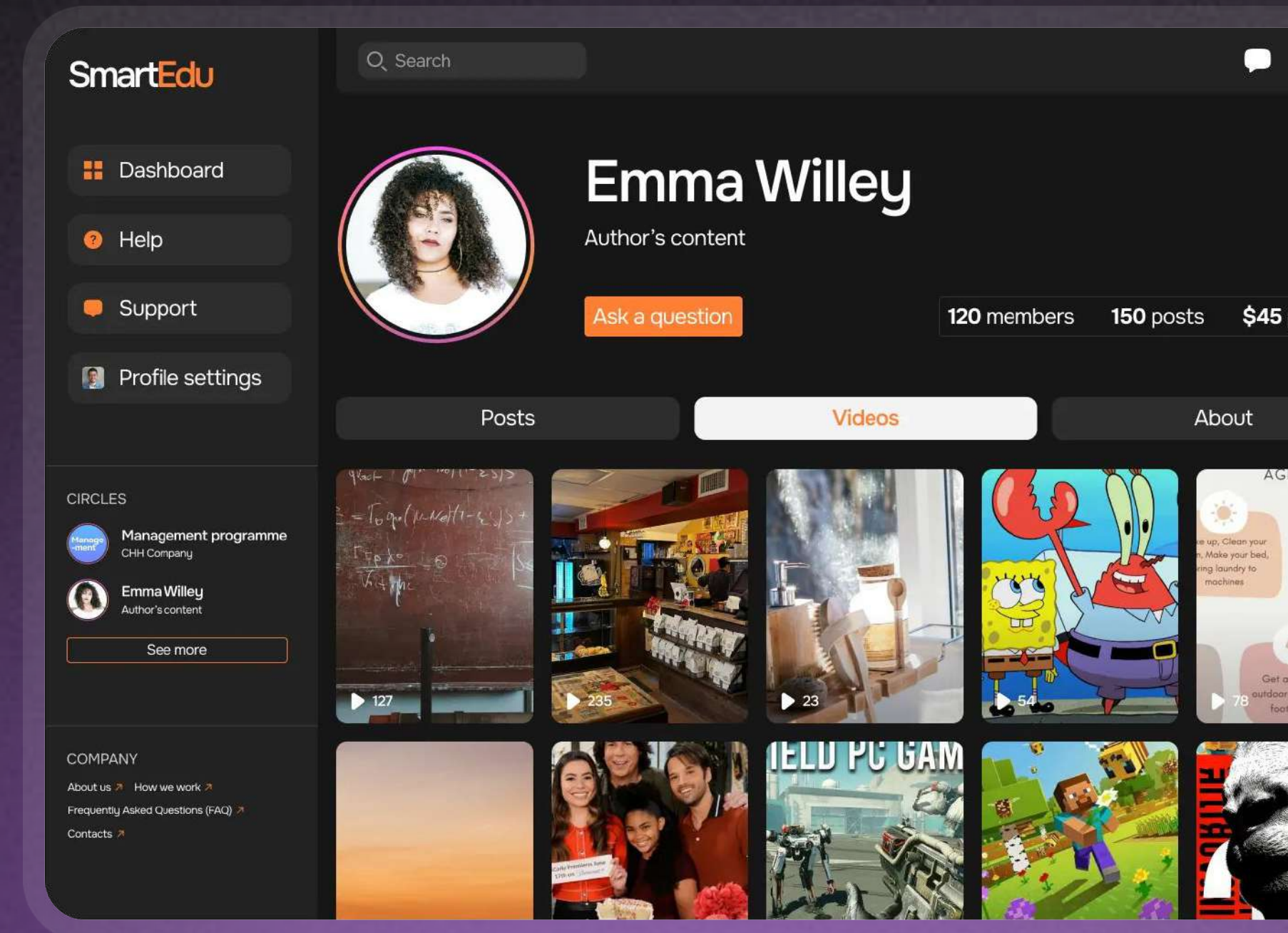
# Educational Web Application

## SOLUTION

We built a secure, interactive, and scalable platform supporting authentication, account management, backend operations, and seamless payments.

- **Authentication Portal** – Secure sign-in and registration with React Hook Form, Yup, and AWS Cognito.
- **User Account & Social Interaction** – Profile management, content posting, and engagement in mentor-led “circles.”
- **Backend Integration** – Efficient REST API communication for responsive, scalable performance with real-time monitoring.
- **Payment Processing** – Stripe integration for easy subscriptions and clear billing notifications.

A unified platform combining learning, social interaction, and secure transactions.



\* The image is illustrative. Project details cannot be disclosed due to the conditions of NDA between the Development Team and the Customer.

# Educational Mobile Application

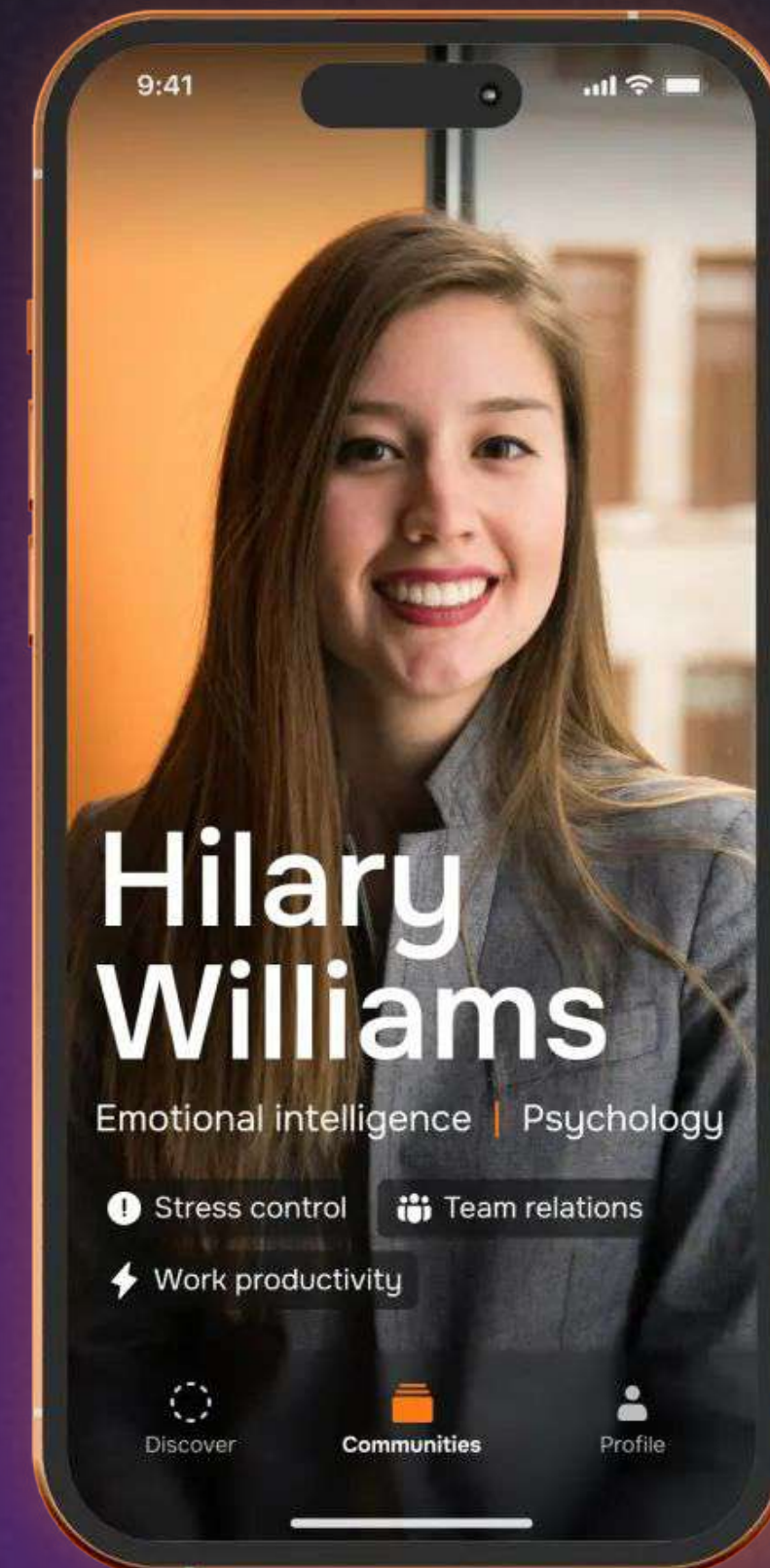
## SOLUTION

We developed a high-quality, cross-platform mobile app with enhanced authentication, improved user experience, and optimized performance.

- **Cross-Platform Development** – Built with Flutter for iOS and Android, ensuring a consistent experience and efficient code maintenance.
- **Authentication Improvements** – Optimized sign-in processes for faster, more intuitive login and reduced friction.
- **User Experience Enhancements** – Improved navigation, loading times, and overall app stability for a smoother experience.

The result is a stable, user-friendly mobile app delivering seamless experiences across devices.

\* The image is illustrative. Project details cannot be disclosed due to the conditions of NDA between the Development Team and the Customer.



# Results

01

**Daily Bite-Sized Challenges** – Employees engage with short, practical exercises that reinforce learning and encourage consistent application.

02

**Sustained Skill Development** – Designed to ensure newly acquired skills are applied over the long term, improving leadership performance.

03

**Real-World Impact** – Participants reported directly applying lessons to their teams, enhancing practical leadership development.

# Cross-Platform Sports Streaming & Real-Time Stats App

PROFESSIONAL SPORTS

MEDIA

ENTERTAINMENT

A cross-platform mobile application for live sports streaming and real-time analytics delivers tournament coverage through live and on-demand video, leaderboards, shot-level tracking, and player insights. Users can follow favourite players and teams, receive timely updates, and access premium content throughout the season.

## TECHNOLOGIES

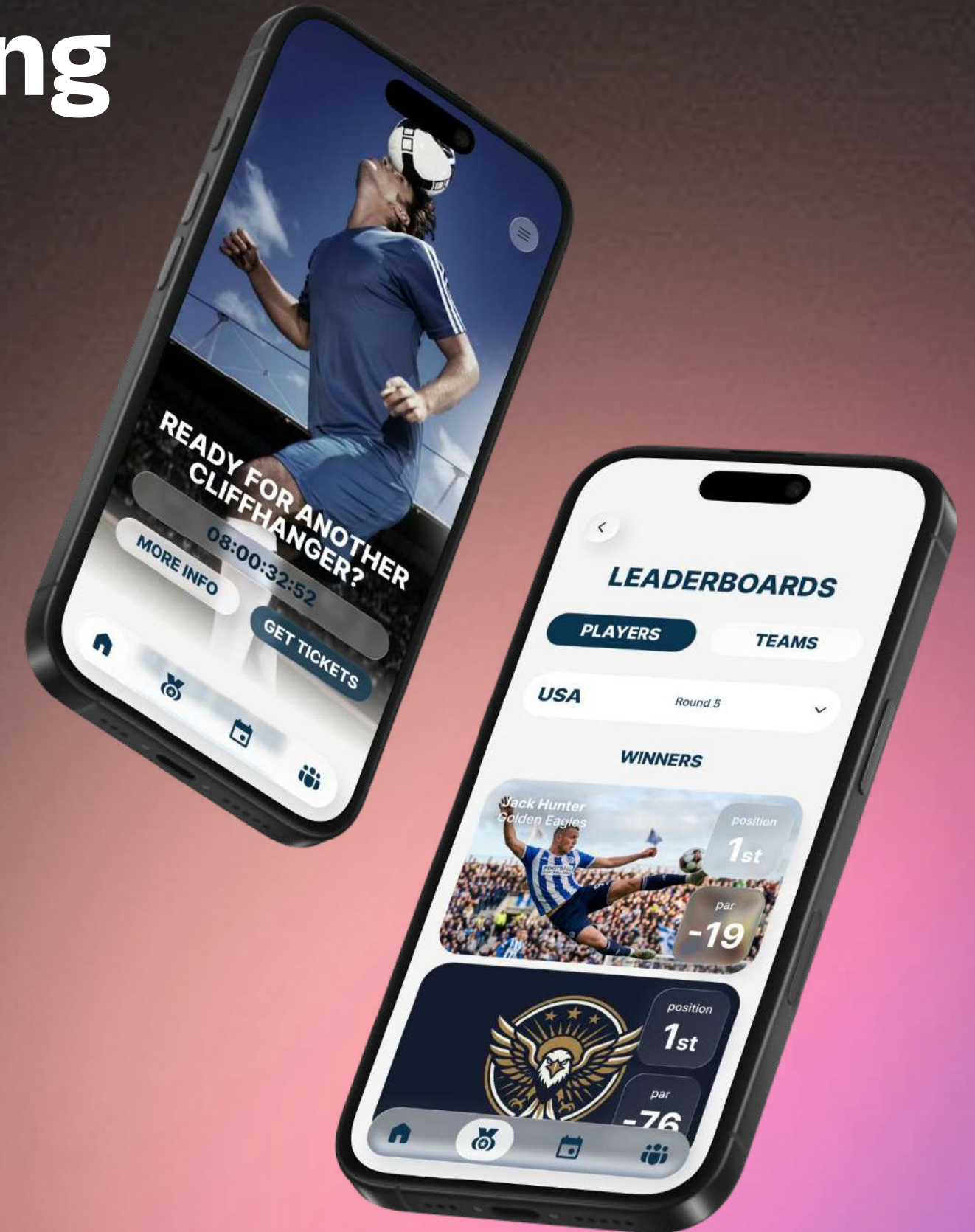
**Core Development:** React Native (Expo), TypeScript

**Data Fetching & API Layer:** GraphQL, TanStack Query

**Navigation:** React Navigation

**UI & Animations:** React Native Reanimated, Lottie

React Native Video, Sanity CMS, ConfigCat, MMKV, Storybook, Zustand



\* Screens have been partially anonymized due to NDA restrictions.

1/5

# Cross-Platform Sports Streaming & Real-Time Stats App

## CHALLENGE

The client needed a fully functional mobile application to be developed from scratch within extremely tight deadlines while simultaneously supporting live sports events.

### Specific challenges included:

- Continuously evolving requirements and UI in a fast-moving Agile environment
- No separate QA stream, requiring the engineering team to take full ownership of testing and release quality
- Delivery within a distributed team across Europe and the US, requiring efficient cross-time-zone collaboration
- Backend delays, making a UI-first development approach essential
- The initially selected third-party video solution did not meet production requirements and had to be replaced mid-project
- Lack of stable test data and inconsistencies in CMS responses

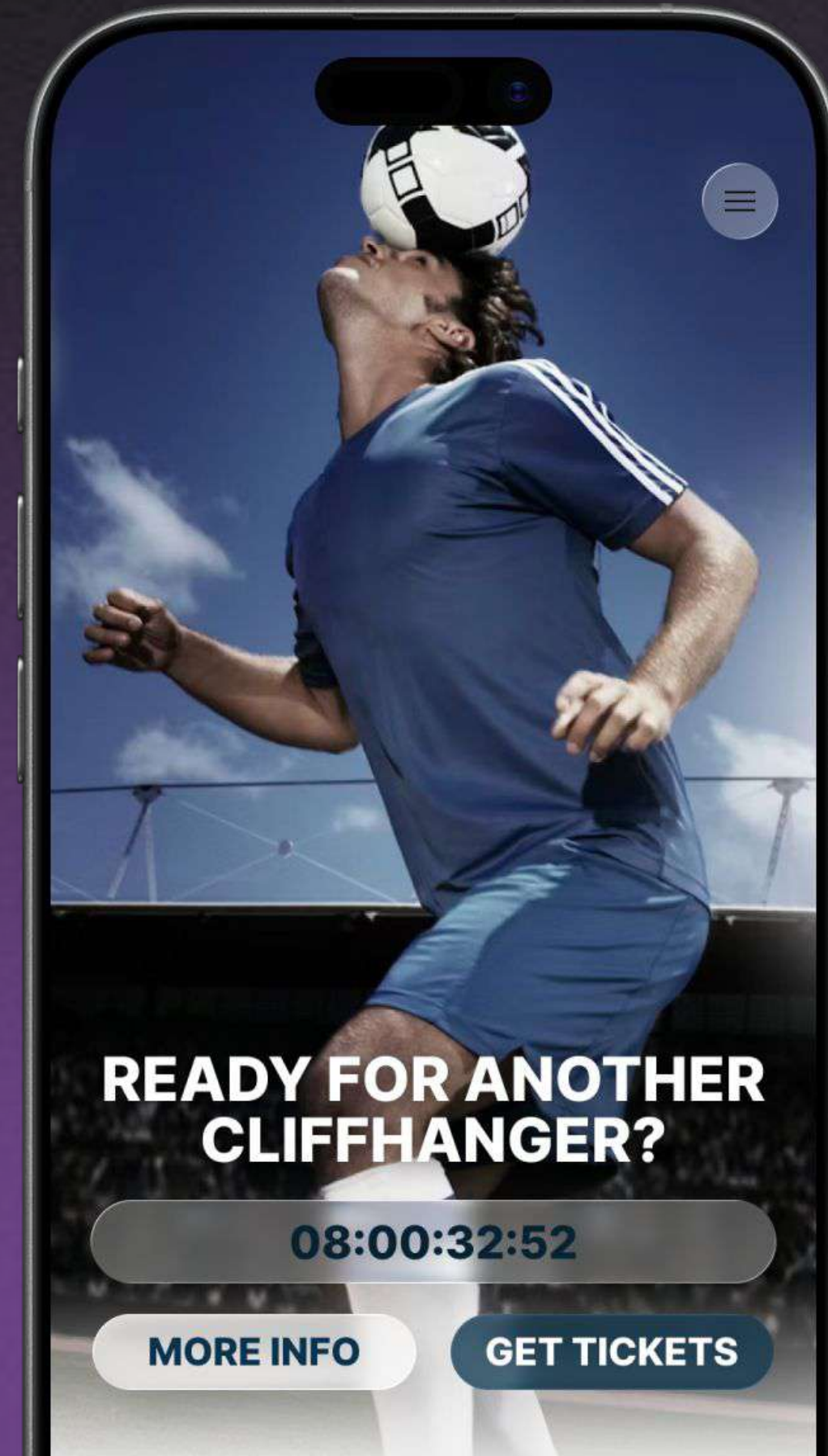
# Cross-Platform Sports Streaming & Real-Time Stats App

\* Screens have been partially anonymized due to NDA restrictions.

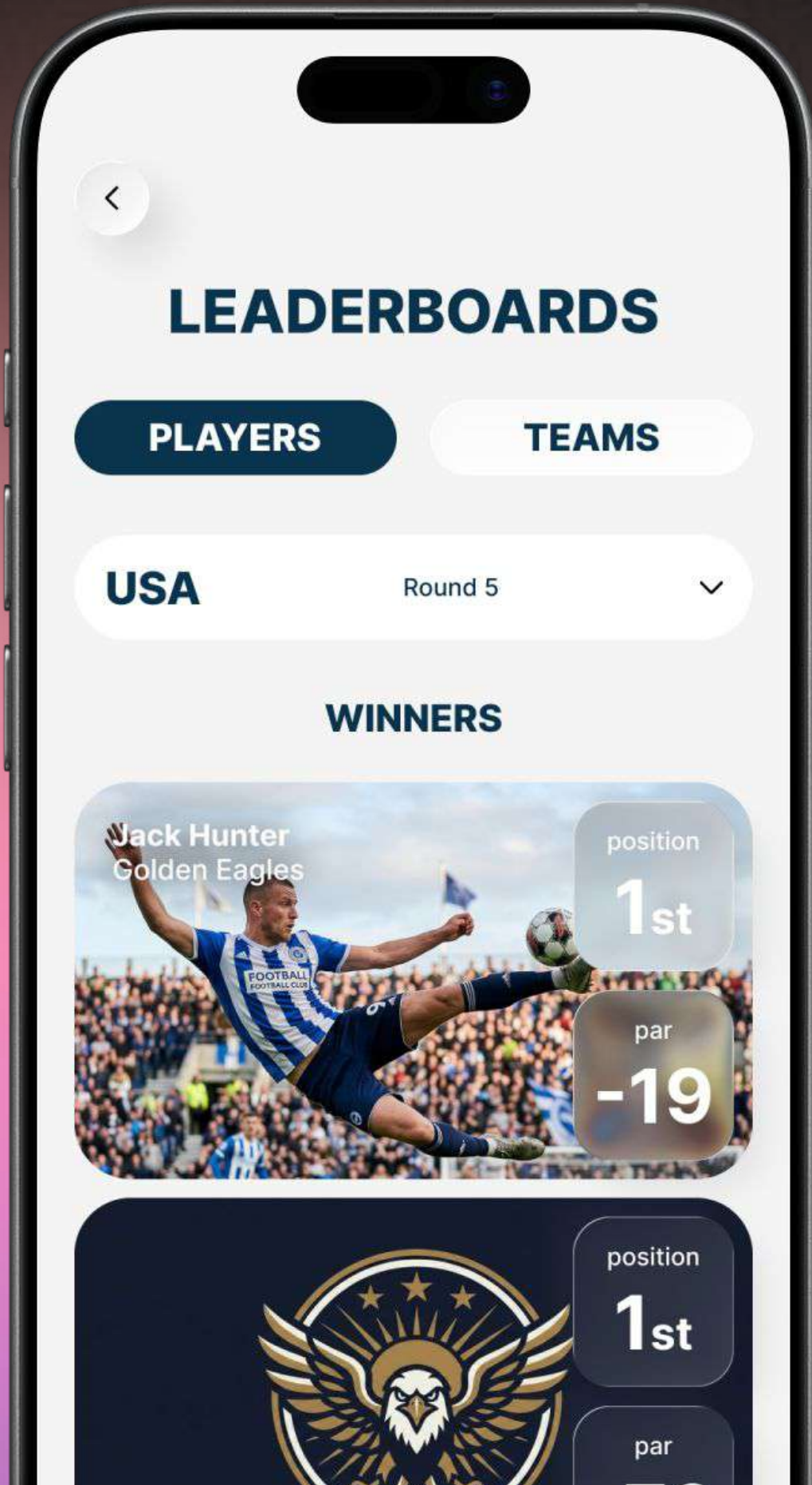
## SOLUTION

The team adopted a flexible Agile delivery model focused on speed and adaptability. A UI-first approach kept development moving despite backend delays, while the team replaced the original video solution with a more stable playback approach better suited for production use.

To handle incomplete and inconsistent data, engineers used reverse-engineering methods to simulate and validate data flows, ensuring stable application behaviour. The team also maintained a rapid issue-response and release cycle to support reliability during live events, including second-line support outside regular working hours.



\* Screens have been partially anonymized due to NDA restrictions.



# Cross-Platform Sports Streaming & Real-Time Stats App

## SOLUTION

- Live and on-demand video streaming
- Real-time leaderboards and player statistics
- Personalised content based on favourite players and teams
- Integration with a headless CMS for dynamic content management
- Subscription-based premium access
- In-app purchases for additional viewing tiers
- Fan engagement features with rewards
- On-demand replay of specific moments and events

The application was tailored to support global sports scheduling, high-load live events, personalised user experiences, and seamless migration from legacy native applications to a unified cross-platform product.

# Keen on exploring further?

Let's discuss your requirements and come up with a tailored solution!

At Timspark, we intend to bring value and competitive advantage to our clients. Our dedicated teams can help you achieve your goals and add value to your offerings.

REACH OUT



**Marketing Team**

[marketing@timspark.com](mailto:marketing@timspark.com)

